

HIGHER EDUCATION IN IDAHO

2023-2024

TABLE OF CONTENTS

JUNIOR AND SENIOR CHECKLIST	PG 3-4
QUESTIONS FOR AN ADMISSIONS REPRESENTATIVE	PG 5-6
BOISE BIBLE COLLEGE	PG 7
BOISE STATE UNIVERSITY	PG 8
BYU - IDAHO	PG 9
COLLEGE OF EASTERN IDAHO	PG 10
COLLEGE OF SOUTHERN IDAHO	PG 11
COLLEGE OF WESTERN IDAHO	PG 12
IDAHO STATE UNIVERSITY	PG 13
LEWIS-CLARK STATE COLLEGE	PG 14
NORTH IDAHO COLLEGE	PG 15
NORTHWEST NAZARENE UNIVERSITY	PG 16
THE COLLEGE OF IDAHO	PG 17
UNIVERSITY OF IDAHO	PG 18
TOP ACADEMIC PROGRAMS	PG 19-20
NEXT STEPS IDAHO: INFINITE FUTURES	PG 21
NEXT STEPS IDAHO: PROFESSIONAL TRAINING	PG 22

To the students and family of Idaho:

The Idaho Association of Collegiate Registrars and Admissions Officers (IACRAO) is proud to share with you the 2023-2024 Higher Education in Idaho Magazine. In this publication you will find helpful information about Idaho's colleges and universities. Our mission is to ensure you have the information you need to make your go-on decision and to understand the investment you are making for your future.

Thank you for taking time to learn more about the institutions of Higher Education in the state of Idaho. We wish you success in your academic pursuits.

Sincerely,

The 2023-2024 IACRAO Executive Board

Seneca Jensen, University of Idaho
– President

Bianca Ridley, Idaho State University
– President-Elect

Effie Hernandez, College of Eastern Idaho
– Past-President

Jaquel Fluckiger, BYU-Idaho
– Secretary-Treasurer

Ben Hyde, BYU-Idaho
– High School Relations/Admissions Chair

Hala Abou Arraj, Idaho State University
– Registrar Chair

Rosita Nabarrete, Lewis-Clark State College
– Higher Ed Tour Chair

Morgan Betts, Idaho State University
– College Application Month Chair

Andrea Orozco
– State Board of Education Advisory Chair

Arturo Perez, College of Southern Idaho
– Diversity Chair

Westin Cordier, BYU-Idaho
– Technology/Communication Chair



Idaho Association of Collegiate Registrars and Admissions Officers



JUNIOR

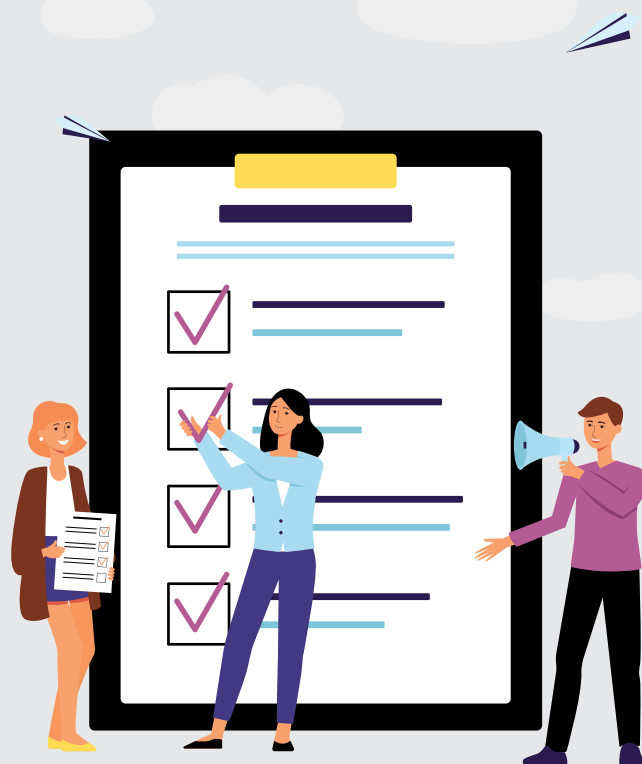
CHECKLIST

- ☐ **PLAN YOUR JUNIOR AND SENIOR YEAR COURSES.** Make sure to check with your High School Counselor to review your schedule and ensure you are meeting your graduation requirements
- ☐ **ATTEND IDAHO HIGHER EDUCATION DAY.** This annual, spring event, will help you learn more about your options to continue your education within the state of Idaho.
- ☐ **TAKE THE SAT.** Some colleges may require the SAT or ACT for fall 2022 admission or scholarships. Check with your counselor or colleges you're considering and register to take the test if required.
- ☐ **CHECK OUT COLLEGES AND UNIVERSITIES.** Utilize your spring and summer break to try and visit schools you are interested in either virtually or in-person. Take a tour of the campus, meet faculty, visit the Financial Aid Office, and tour the dorms--these are all great ways to help you determine if you can visualize yourself as a future student.
- ☐ **DEVELOP A RESUME.** Use this as a record of your accomplishments, activities, work, and volunteer experience(s). If you are looking to build your resume, consider joining a school club, religious or civic group, or maybe take on a new leadership role!
- ☐ **RESEARCH COLLEGE APPLICATIONS.** Make the most of your summer vacation by planning your application timeline. As you prepare, make a list of the application and financial aid deadlines so you can check back on this during your senior year.
- ☐ **TALK ABOUT FINANCES WITH A PARENT OR MENTOR.** Create a college budget and brainstorm ways to fund your education. Consider getting a summer job to start building a college fund, boost your resume, and explore fields of interest.
- ☐ **EXPLORE SCHOLARSHIPS.** Did you know there are scholarships available to juniors? Be sure to review their requirements to see if they require community service or affiliation with a national club. If so, utilize this year to complete any missing requirements.

SENIOR

CHECKLIST

- ❑ **COMPILE YOUR COLLEGE LIST.** Create a document that includes your schools of interest, their deadlines, and what additional requirements might be needed to complete your application. If schools require the ACT/SAT and you have not taken this test yet, make sure to register!
- ❑ **PREP SUPPLEMENTAL MATERIALS.** Some colleges or universities might require additional materials such as an essay, letters of recommendation, or a resume. As you finalize these materials, make sure to ask for feedback from your teachers, counselors, or other close mentors.
- ❑ **SUBMIT YOUR COLLEGE APPLICATIONS.** Consider applying to more than one college or university. You can weigh your offers and financial aid packages later in the spring to help determine where you might attend. Use the Apply Idaho application at nextsteps.idaho.gov/resources/apply-idaho to apply for all the state schools at one time. BYU-Idaho, Boise Bible College, and out of state universities require a separate application.
- ❑ **REQUEST YOUR TRANSCRIPTS.** Some colleges or universities will require that you submit your high school transcript to apply. Check with your chosen colleges or universities to learn how to submit your transcript to them.
- ❑ **APPLY FOR SCHOLARSHIPS AND GRANTS** like the Idaho Opportunity Scholarship. boardofed.idaho.gov/scholarships/idaho-opportunity-scholarship/ Ask your High School Counselor, Admissions Representative, or any local organizations you are involved with to see if they might have any additional opportunities. A great scholarship resource is: boardofed.idaho.gov/scholarships/
- ❑ **SUBMIT YOUR FAFSA.** Completing the FAFSA is the first step to getting grants or loans from federal or state governments and colleges and universities. In addition, this might be required for some scholarship applications. Check with your High School Counselor to see if your school might be hosting a FAFSA completion night to help get you started.
- ❑ **ACCEPT YOUR ADMISSION OFFER.** Congratulations- it's time to decide! Review your offers (including tuition, financial aid package(s), academic programs, etc.) and notify which school you will join in the fall. Then, be sure to follow up to learn about any remaining next steps.
- ❑ **SIGN UP FOR HOUSING.** Ask your chosen schools about housing options and deadlines, as open spaces can fill up quickly!



QUESTIONS

FOR AN ADMISSIONS REPRESENTATIVE

Researching your options after high school can be overwhelming, exciting, and stressful. However, colleges and universities have Admissions Representatives to help guide you through this process. Check with your High School Counselor to see when these representatives are visiting and how to reach out to them. Whether you meet in person, set up a virtual meeting, or reach out with a phone call or email, here are some questions to help you get started.

Remember, there is no such thing as a bad question. Admissions Representatives are always happy to help you through this process, even if you're not sure what to do next.

CAN I SEE MYSELF ON THIS CAMPUS?

1. When should I visit your school? What types of campus visits do you offer? Do you offer virtual visit opportunities?
2. What is one word students would use to describe your school?

WHAT ARE THE ADMISSION REQUIREMENTS?

1. How do I apply? Where is your application located? What materials do you need from me?
2. What do you look for in an applicant? When is your application deadline?

HOW DO I PAY FOR YOUR COLLEGE?

1. How much will it cost to go to your school? What is included in that cost? Who can help me learn more?
2. What type of scholarships do you offer? When is the deadline? What is the criteria? How do I apply for them?

WHAT IS THE CLASSROOM/ACADEMIC EXPERIENCE LIKE?

1. What is the average class size? What is the biggest classroom on campus?
2. Here are a few subject areas/future jobs I'm interested in. What study abroad trips, internships, research opportunities, or projects are available for me? Is there a person I can contact to learn more? Feel free to ask what students gain from doing exploration opportunities

WHAT IS STUDENT LIFE LIKE ON YOUR CAMPUS?

1. Is it required to live on campus? If so, what is it like and how much does it cost? What does that cost include? If it's not required to live on campus, where do you recommend I live?
2. What do students do for fun both on and around your campus? I am interested in (tell them your favorite club or activity). Do you have that at your school?

WHAT SUPPORT OR RESOURCES ARE THERE?

1. What health and academic support services are on campus? Do you offer tutoring support or writing centers? Is there a fee?
2. If I need additional accommodations, who can I contact? What accommodations could be available to me?

WHAT CAN I DO AFTER GRADUATION?

1. How does your school help prepare students before graduation? Do you have a Career Services office? If so, how can they help?
2. What are your students doing after graduation?

Review the questions above and highlight your favorite ones to ask! Write down which schools you are interested in.

1. _____
2. _____
3. _____

Are any of these schools planning to visit your high school? When? If not, ask your High School Counselor for assistance in finding out who to contact.

NOTES: What have you learned or want to remember after contacting the Admissions Representative?
Do you have any follow-up questions you want to ask?

COLLEGES IN IDAHO





When a student graduates, we want them to know who they are, their place in Christ's mission, and to be people of influence in their chosen career. Uniquely, the degrees in Education, Psychology, and Christian Ministry focus both on character development and professional skills. So, whether a student attends for one-year or four-years, on this journey they should feel like they belong in an accepting environment where they deepen their relationship with Jesus while being equipped to advance the gospel worldwide through vocational ministry or the marketplace.

TAKING A TOUR:

www.boisebible.edu/visit-campus

HOW TO APPLY:

www.boisebible.edu/apply

TUITION: (PER YEAR)

Resident: \$10,400

FINANCIAL AID:

www.boisebible.edu/cost-and-financial-aid

GET IN TOUCH:

boisebible.edu
208-376-7731
admissions@boisebible.edu





BOISE STATE UNIVERSITY

At Boise State, Broncos are encouraged to question the status quo, challenge conventional wisdom and push the boundaries of knowledge. As a student here, you'll join a vibrant and inclusive community of thinkers, dreamers and doers. Our campus is a hub of creativity and collaboration, where you'll have the chance to connect with fellow students who share your passion for making a difference.

Centrally located at the heart of the capital, we cultivate strong connections with regional government, business and health care. Nestled by the Boise River, Broncos take advantage of our close proximity to the adventures that lie along the Greenbelt, in the foothills and beyond! As Idaho's metropolitan research university, our cutting edge technology and academic success fuel the University and surrounding community. So, no matter what draws you here, you can maximize your potential and achieve more.



TAKING A TOUR:

go.boisestate.edu/visit
208-426-1156

FINANCIAL AID:

boisestate.edu/financialaid
208-426-1664

HOW TO APPLY:

go.boisestate.edu/apply

APPLICATION AND SCHOLARSHIP PRIORITY DEADLINE:

February 15
Application materials must be received
by this date for consideration

TUITION (PER YEAR):

Idaho Resident: \$8,882

GET IN TOUCH:

boisestate.edu
208-426-1156
admissions@boisestate.edu





Founded in 1888, BYU-Idaho cultivates a distinctive environment in accordance with the standards of its sponsor, The Church of Jesus Christ of Latter-day Saints. While most universities are research-focused and faculty-centered, BYU-Idaho is teaching focused and student-centered. Through hands-on student instruction and leadership opportunities, students are given practical opportunities to build skills that will help them become Disciples of Christ and leaders in the workforce. As students engage in active teaching and learning, they will become a qualified leader in their families, the Church, the workplace, and the community.

TAKING A TOUR:

byui.edu/campus-tours
208-496-1411

HOW TO APPLY:

byui.edu/admissions/apply
208-496-1411
Deadline: September 1

TUITION: (PER YEAR)

LDS: \$4,656
Non LDS: \$9,312

FINANCIAL AID:

byui.edu/inancial-aid
Deadline: August 1
(also based on FAFSA)

GET IN TOUCH:

byui.edu/admissions
208-496-1411
admissions@byui.edu





College of Eastern Idaho, located in Idaho Falls, is Idaho's newest community college offering students both AA and AS degrees (starting Spring 2018) as well as Career Technical Education. Our technical programs provide hands-on-training to give our students real world experience to prepare them to enter their chosen career. Our academic degrees provide pathways to help students get their 2 years of general education completed before transferring to a university. We pride ourselves on our small class sizes, with a student to teacher ratio of 10 to 1 in 2019-2020. Our high graduate job placement rate of 92% is another way we take care of our students. We believe in Real Education, Real Jobs for Real Life.



TAKING A TOUR:

208-524-3000
or 208-535-5337

HOW TO APPLY:

cei.edu/admissions
208-524-3000
Deadline: none

TUITION: (PER YEAR)

In-District: \$3,390

FINANCIAL AID:

eitc.edu/inancial-aid
208-524-3000
Deadline: June 1

GET IN TOUCH:

www.cei.edu
208-524-3000
admissions@cei.edu





Nestled in the heart of Southern Idaho, a place we like to call Eagle Country, CSI's main campus is located in beautiful Twin Falls. With off-campus locations in Jerome and Burley as well as numerous online options, CSI offers over 110 associate degree and certificate programs, along with the first community college-based bachelor's degree in Idaho. Our 315-acre campus houses a state-of-the-art Fine Arts Center, newly renovated dorms, more than 50 student clubs, and 9 National Junior College Athletic Association teams with more than 20 national championships between them – and we're adding men's and women's soccer in 2024! Skiing, rock climbing, geothermal hot springs, white water rafting, fishing, hiking, and more are all less than an hour away. And the College of Southern Idaho remains one of the most affordable higher education options in Idaho. Go Eagles!

TAKING A TOUR:

www.csi.edu/tours
208-732-6221

HOW TO APPLY:

www.csi.edu/apply
208-732-6221

TUITION: (PER YEAR)

In-District: \$3,360
Out-of-District: \$4,560

FINANCIAL AID:

www.csi.edu/financialaid
208-732-6250
Priority Date: July 16
(applications and documents turned in)

GET IN TOUCH:

www.csi.edu/admissions
208-732-6221

College of Western Idaho (CWI) is located in the Treasure Valley—the state’s cultural and economic hub. The Treasure Valley is recognized nationally as a great place to live, work, and get an education. CWI is the largest community college in Idaho and provides students an abundance of opportunities for learning. Locations include Boise, Nampa, and Online. Numerous degrees are offered fully online as well as hundreds of hybrid and online courses. CWI offers affordable education with low cost per credit and access to scholarships and financial aid. With a full range of certificates and two-year degrees, transferring to a university or directly into the workforce are both great options. The quality of education at CWI competes with any college or university.



TAKING A TOUR:

cwi.edu/visit-cwi
208-562-3000

HOW TO APPLY:

cwi.edu/apply-cwi
208-562-2960
onestop@cwi.edu
Deadline: August 10

TUITION: (PER YEAR)

In-District: \$3,336
Out-of-District: \$4,336

FINANCIAL AID:

cwi.edu/cost-aid
208-562-2940

GET IN TOUCH:

cwi.edu/contact-us
208-562-3000
onestop@cwi.edu





**Idaho State
University**



Idaho State University is a Carnegie-classified research institution located in Pocatello, with additional locations in Idaho Falls, Meridian and Twin Falls. At the heart of an outdoor-lover's paradise, Idaho State is a short drive to some of America's greatest natural wonders and exciting outdoor recreation opportunities. Idaho State is the state's designated leader in the health professions, and with more than 250 academic programs and 150 student clubs and organizations, there are plenty of opportunities to become part of the Bengal community. Opportunities for undergraduate research, performing in a nationally acclaimed performing arts center, and personal interaction with faculty members are just a few of the reasons our students choose Idaho State.



TAKING A TOUR:

isu.edu/visit
208-282-2123

HOW TO APPLY:

isu.edu/apply
208-282-2123
Deadline: August 1

TUITION: (PER YEAR)

Idaho Resident \$8,356

FINANCIAL AID:

isu.edu/financialaid
208-282-2756
Scholarship Deadline: July 1

GET IN TOUCH:

isu.edu/visit
208-282-2100
info@isu.edu





LEWIS CLARK

STATE COLLEGE

Rated as one of the top four public regional colleges in the West by U.S. News & World Report, Lewis-Clark State College is a school dedicated to your needs. "The Warrior Way" at LC State is about quality education and a warm campus culture, all at a price that you can afford. LC State features a personalized classroom experience in a small college environment, where faculty and staff will go the extra mile for you. Located in Lewiston, the tree-lined campus blends traditional and modern structures, while wilderness and recreation areas are only minutes away. At LC State, "The Warrior Way" is more than an education: it's a lifestyle.



TAKING A TOUR:

lcsc.edu/visit
208-792-2378

HOW TO APPLY:

lcsc.edu/admissions
Deadline: August 8

TUITION: (PER YEAR)

Idaho Resident: \$7,388

FINANCIAL AID:

lcsc.edu/financialaid or
208-792-2224

GET IN TOUCH:

lcsc.edu
208-792-2210
208-792-2378
admissions@lcsc.edu



At North Idaho College, we don't fit into the typical community college box. We have the high-energy atmosphere and school spirit of a big four-year university but the diverse interests and practical, down-to-earth attitude of a smaller school. We don't fit into a box, and we'll never put you in one either. No matter what you're here to accomplish—whether you're mastering a trade or earning your associate degree, finding your way or sprinting to the finish line—we'll give you everything you need to excel. And then stand back and watch you thrive



North Idaho College



TAKING A TOUR:

nic.edu/visit
208-769-3456
visit@nic.edu

HOW TO APPLY:

nic.edu/apply
208-769-3311



TUITION: (PER YEAR)

In-District: \$3,396
Out-of-District: \$4,960

FINANCIAL AID:

nic.edu/financialaid
208-769-3311



GET IN TOUCH:

nic.edu/CardinalCentral
877-404-4536
CardinalCentral@nic.edu



NORTHWEST
NAZARENE UNIVERSITY

Northwest Nazarene University is a comprehensive Christian university committed to the transformation of the whole person. With more than 80 areas of undergraduate study, 18 master's degrees in six different disciplines, five Education Specialists degrees and two doctoral degrees, to choose from, you'll never have to settle for less than your true passion.

In addition to high academic standards, NNU places an equal amount of value on relationships. With more than 40 clubs and organizations, international service projects, study abroad opportunities, and campus events, opportunities for growth and involvement abound at NNU.



TAKING A TOUR:

nnu.edu/visit
208-467-8640

HOW TO APPLY:

nnu.edu/apply
1-877-NNU-4-YOU
Email: admissions@nnu.edu

TUITION: (PER YEAR)

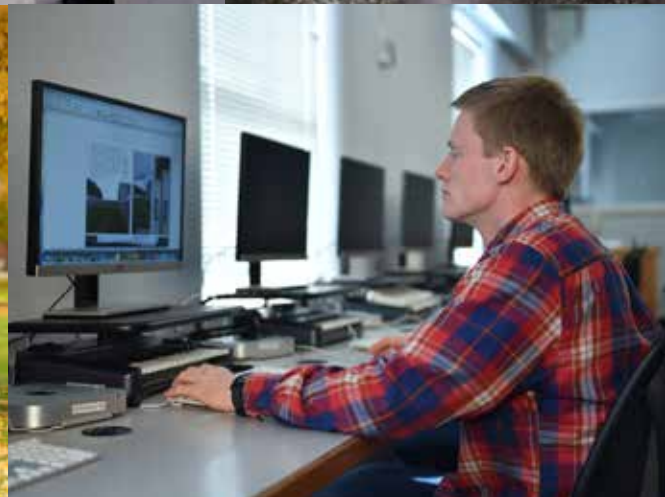
Resident: \$38,570

FINANCIAL AID:

(based on admission application and FAFSA)
208-467-8638
Deadline: January 15

GET IN TOUCH:

nnu.edu
1-877-NNU-4-YOU
admissions@nnu.edu





The College of Idaho has a 129-year-old legacy of excellence. The College is known for its outstanding academic programs, winning athletics tradition, and history of producing successful graduates, including seven Rhodes Scholars, three governors, and countless business leaders and innovators. Its distinctive PEAK Curriculum challenges students to attain competency in the four knowledge peaks of humanities, natural sciences, social sciences, and a professional field—empowering them to earn a major and three minors in four years. The College's close-knit, residential campus is located in Caldwell, where its proximity both to Boise and to the world-class outdoor activities of southwest Idaho's mountains and rivers offers unique opportunities for learning beyond the classroom.



TAKING A TOUR:

collegeofidaho.edu/visit
208-459-5124 or
visitcenter@collegeofidaho.edu

HOW TO APPLY:

collegeofidaho.edu/apply
Deadline: May 1
Regular Decision February 15

TUITION: (PER YEAR)

Resident: \$35,180

FINANCIAL AID:

collegeofidaho.edu/financialaid
208-459-5307
Deadline: February 15

GET IN TOUCH:

collegeofidaho.edu/admission
208-459-5011
admission@collegeofidaho.edu



University of Idaho

TAKING A TOUR:

uidaho.edu/visit
208-885-6163

HOW TO APPLY:

uidaho.edu/application
208-885-6326
Email: admissions@uidaho.edu
No Deadline

TUITION: (PER YEAR)

Resident: \$8,816

FINANCIAL AID:

uidaho.edu/financial-aid
208-885-6312

GET IN TOUCH:

uidaho.edu/my-idaho
208-885-6163
futurestudents@uidaho.edu

There's something monumental waiting for you at the University of Idaho. We call it your breakthrough — that moment the light sparks on and your future opens. Your breakthrough might happen as you study fire in our experimental forest. Cheer on Vandal football beneath our iconic Kibbie Dome. Or gather with friends on our beautiful ivy-clad campus. At Idaho's largest research university, you explore big questions and find unexpected answers. Choose from 300 academic programs. Learn from professors with world-renowned expertise. Do real research (2/3 of undergraduates participate in hands-on experiences). Here, you awaken your mind, forge a new path, and discover what's next for you and the world. What will your breakthrough be?



TOP ACADEMIC PROGRAMS

BY INSTITUTION

BOISE BIBLE COLLEGE

Christian Teaching • Christian Psychology • Christian Leadership
Intercultural Studies • Preaching Ministry • Worship Arts
Early Childhood Education • Family and Children's Ministry
Family and Youth Ministry • Bible Certificate

www.boisebible.edu/degree-programs

BOISE STATE UNIVERSITY

Business • Nursing • Psychology • Kinesiology • Biology • Health Science
Computer Science • Criminal Justice • Mechanical Engineering

majors.boisestate.edu

BRIGHAM YOUNG UNIVERSITY - IDAHO

Business, Communications • Nursing • Education
Construction Management • Engineering

www.byui.edu/catalog#/programs

COLLEGE OF EASTERN IDAHO

General Education AA and AS • Registered Nursing • Automotive
Welding • Information Technology Services • Cyber Security

www.cei.edu/programs-of-study

COLLEGE OF SOUTHERN IDAHO

Liberal Arts • General Business • Healthcare • Criminal Justice
Education • Business Management • Practical Nursing • Digital Media
Accounting/Bookkeeping • Diesel Technology

csi.smartcatalogiq.com/en/2020-2021/Catalog/Majors

COLLEGE OF WESTERN IDAHO

Business • Auto Technology/Auto Body • Criminal Justice/Law Enforcement
Nursing • Welding • Dental Assisting • Engineering • Health Sciences
Fire Service Technology • Communication/Marketing

cwi.edu/program

Compare the most popular and unique offerings from these Idaho institutions. Be sure to visit the listed website for a complete list of an institution's programs and majors.

IDAHO STATE UNIVERSITY	Nursing • Dental Hygiene • Pre-Health Professions • Psychology Accounting • Robotics • Nuclear Engineering • Biology Physical Education - Exercise Science Emphasis • Welding isu.edu/majors/
LEWIS-CLARK STATE COLLEGE	Teacher Education (both Secondary and Elementary) CTE Programs including: <i>Diesel Technology, Graphic Communications, Information Technology, Welding</i> Nursing • Social Work • Creative Writing BFA • Exercise Science Justice Studies • Kinesiology • Radiographic Science • Business • History catalog.lcsc.edu/programs/
NORTH IDAHO COLLEGE	General Studies • Nursing • Health Professions • Business • Computer Science Computer Information Technology / Network Security Administration Education • Psychology • Welding Technology • Diesel Technology nic.edu/programs/
NORTHWEST NAZARENE UNIVERSITY	Computer Science: Artificial Intelligence • Nursing • Engineering • Biology Education • Business • Digital Media • Wildlife Biology and Ecology Health Communication • Youth, Children and Family Ministry nnu.edu/majors
THE COLLEGE OF IDAHO	Business • Psychology • Biology • International Political Economy Biomedical Science • Environmental Studies • History • Political Economy Marketing and Digital Media • Exercise Science www.collegeofidaho.edu/academics/peak
UNIVERSITY OF IDAHO	Agricultural and Life Sciences • Art and Architecture Business and Economics • Education, Health and Human Sciences Engineering • Law • Letters, Arts and Social Sciences • Natural Resources Science • Pre-Health Professions/WWAMI Medical Program www.uidaho.edu/degree-finder

COMPARE **YOUR OPTIONS**

	DEGREE OFFERINGS					
	CERTIFICATES	ASSOCIATE OF APPLIED SCIENCE (AAS)	ASSOCIATE OF SCIENCE (AS) ASSOCIATE OF ARTS (AA)	BACHELOR OF SCIENCE (BS) BACHELOR OF ARTS (BA)	MASTERS	DOCTOR OF PHILOSOPHY PROFESSIONAL DOCTORATE
BOISE BIBLE COLLEGE	✓		✓	✓		
BOISE STATE UNIVERSITY	✓		✓	✓	✓	✓
BRIGHAM YOUNG UNIVERSITY - IDAHO	✓	✓	✓	✓		
COLLEGE OF EASTERN IDAHO	✓	✓	✓			
COLLEGE OF SOUTHERN IDAHO	✓	✓	✓			
COLLEGE OF WESTERN IDAHO	✓	✓	✓			
IDAHO STATE UNIVERSITY	✓	✓	✓	✓	✓	✓
LEWIS-CLARK STATE COLLEGE	✓	✓	✓	✓		
NORTH IDAHO COLLEGE	✓	✓	✓			
NORTHWEST NAZARENE UNIVERSITY			✓	✓	✓	✓
THE COLLEGE OF IDAHO				✓	✓	
UNIVERSITY OF IDAHO	✓			✓	✓	✓

Can't decide what school is best for you? Compare what each school offers and get information at a glance here.

FALL ADMISSION DEADLINE AND FEE	SCHOLARSHIP APPLICATION DEADLINE	TUITION (1 YEAR)	ON-CAMPUS HOUSING (1 YEAR)	ON-CAMPUS MEAL PLAN (1 YEAR)	FINANCIAL AID PRIORITY DEADLINE
August 15 \$25	June 1	\$9,960	\$2,600-\$4,150	\$3,800	May 15
May 1 FREE	February 15	\$8,060	\$4,000-\$8,549	\$3,783-\$4,650	February 15
September 1 \$35	March 1	LDS: \$4,300 Non LDS: \$8,600	\$1,500-\$3,408	N/A	July 1
No Deadline FREE	February 12	In-District: \$3,096 Out-of-District: \$4,296	N/A	N/A	June 1
August 15 FREE	March 1	In-District: \$3,360 Out-of-District: \$4,560	\$2,500-\$3,000	\$2,400-\$3,000	July 16
August 11 FREE	Varies visit: cwidaho.cc/scholarships	In-District: \$3,336 Out-of-District: \$4,336	N/A	N/A	July 25
August 1 FREE	February 15	\$7,872	\$2,950-\$4,092	\$3,460-\$4,019	February 15
August 8 FREE	March 1	\$6,982	\$3,300-\$5,460	\$2,388-\$3,581	March 1
August 12 FREE	March 15	In-District: \$3,396 Out-of-District: \$4,960	\$4,300-\$6,600	\$2,426-\$3,308	No Deadline
February 1 FREE	Varies	\$32,780	\$1,750-\$4,200	\$2,140-\$5,160	January 15
May 1 FREE	February 15	\$32,100	\$3,450-\$6,500	\$4,916-\$5,762	Awarding Begins in December
No Deadline FREE	December 1 Priority Date	\$8,304	\$4,540-\$6,290	\$4,100-\$4,540	Awarding Begins in January

Your future success starts with taking a step today.

**NEXT
STEPS**
IDAHO

And we've made it easy to find the next step that's right for you.

We've got the tips, tools, and resources to help make sense of everything from college applications and financial aid, to learning how to channel your interests and hobbies into a rewarding career choice.



See your future self.

Take the Future Finder quiz and find out what careers are a match for your skills and interests.

Plan your future lifestyle.

Start thinking ahead and plan for a career to meet your desired lifestyle.



Get ready.

Find out what you need to know to prepare for college, customized for your current grade level.



Research careers pathways.

Discover occupations that closely match to your work-related interests by taking the Career Cluster quiz.

